

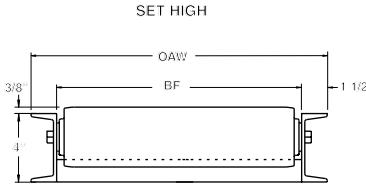
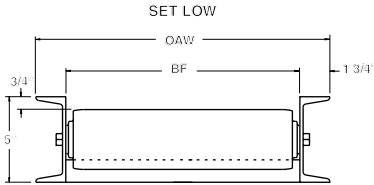
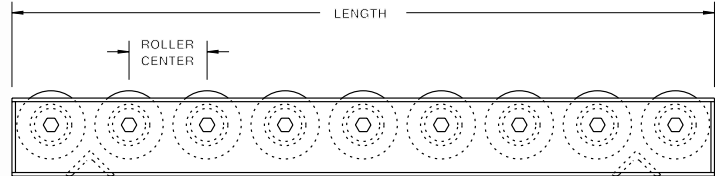
MODEL 3509S 3-1/2" DIA. X 9 GA. STEEL GRAVITY ROLLER CONVEYOR

24 HOUR SHIPMENTS INCLUDE ALL 1-FOOT INCREMENTS 1'-0" TO 10'-0" ON STRAIGHT SECTIONS

STRAIGHT SECTION MODEL NUMBER
3509S-47-4-H-3
 3509S-(between frames)-(roller centers)-
 (set high or low)-(length)



Optional: Use SH or SS supports on page 139



SPECIFICATIONS

ROLLERS: 3-1/2" x 9 ga. steel tubing, model 3509S, with straight ends, reamed to provide smooth bearing seats.

ROLLER CAPACITY: 700 lbs. per roller.

AXLES: 11/16" hex shaft, spring loaded.

FRAMES: 4" at 5.4 lbs. structural steel painted channel set high; 5" at 6.7 lbs. structural steel painted channel set low (extra charge for set low).

COUPLINGS: Butt type.

BEARINGS: Precision ABEC bearings.

FRAME CAPACITY: 3750 lbs. maximum distributed live load per 10' section with supports at 10' centers; 8000 lbs. at 5' centers.

STRAIGHT SECTIONS (WT lbs.)					
NOMINAL ROLLER LENGTH	BETWEEN FRAMES	4" RC 10'	6" RC 10'	8" RC 10'	12" RC 10'
10"	11"	296	234	203	172
14"	15"	366	280	238	195
18"	19"	435	327	273	218
22"	23"	505	373	307	242
26"	27"	575	420	342	265
30"	31"	645	466	377	288
34"	35"	714	513	412	311
38"	39"	784	559	447	334
42"	43"	854	606	482	358
44"	45"	888	629	499	369
46"	47"	923	652	516	381
50"	51"	993	699	551	404
Per Foot		17	12	9	6



WARNING

Prevent pinch points that exist when gravity conveyors are permanently attached to power conveyors and other equipment!

■ 24 hour shipment