

# GATES MANUAL GATES



Manual gate assemblies are one of the most common conveyor accessories. Simple to install, manual gate assemblies offer passage to and from operator work cells as well as providing access for fork trucks, walkways, etc. Gates include hardware and conveyor section.

## MANUAL GATES MODEL NO. (ROLLER) 196SGM-13-6-3

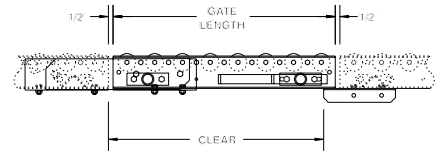
(gate model)-(between frames\*)-(roller centers)-(length)  
\*Specify 12", 18" or 24" overall width on gate models  
138GGM and 138AGM.

## MANUAL GATES MODEL NO. (WHEEL) WSGM-18-12-2

(gate model)-(overall width\*)-(wheels per foot)-(length)  
\*Specify 12", 18" or 24" overall width on gate models  
WSGM and WAGM.

MODEL NO.	TYPE OF CONVEYOR	MINIMUM ELEVATION	MINIMUM LENGTH	MAXIMUM LENGTH	MAXIMUM WEIGHT
WSGM	GALV. WHEEL	3-5/8"	6"	5'	75 lbs.
WAGM	ALUM. WHEEL	3-5/8"	6"	5'	75 lbs.
138GGM	138G GALV.	3-3/8"	6"	5'	75 lbs.
138AGM	138A ALUM.	3-3/8"	6"	5'	75 lbs.
196SGM	196S STEEL	4-3/8"	6"	5'	75 lbs.
196GGM	196G GALV.	4-3/8"	6"	5'	75 lbs.
192SGM	192S STEEL	4-3/8"	6"	5'	75 lbs.
254SGM	254S STEEL	4-11/16"	6"	5'	75 lbs.

**CAUTION:** Maximum weight of gate section must NOT exceed 75 lbs. If gate weight (i.e. conveyor section) exceeds 75 lbs., use spring loaded gate below.



■ 24 hour shipment

# SPRING LOADED GATES

MODEL NO.	TYPE OF CONVEYOR	MINIMUM ELEVATION	MINIMUM LENGTH	MAXIMUM LENGTH	MAXIMUM WEIGHT
WSGS	GALV. WHEEL	13" TOR	2'-6"	5'	150 lbs.
WAGS	ALUM. WHEEL	13" TOR	2'-6"	5'	150 lbs.
138GGS	138G GALV.	13" TOR	2'-6"	5'	150 lbs.
138AGS	138A ALUM.	13" TOR	2'-6"	5'	150 lbs.
196SGS	196S STEEL	13" TOR	2'-6"	5'	150 lbs.
196GGS	196G GALV.	13" TOR	2'-6"	5'	150 lbs.
192SGS	192S STEEL	13" TOR	2'-6"	5'	150 lbs.
254SGS	254S STEEL	13" TOR	2'-6"	5'	150 lbs.
251SGS	251S STEEL	13" TOR	2'-6"	5'	150 lbs.

**CAUTION:** If gate weight exceeds 150 lbs., consult factory.

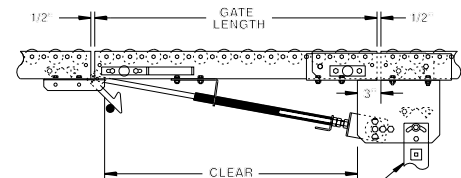
## SPRING LOADED GATES MODEL NO. (ROLLER) 251SGS-31\*-6-2

(gate model)-(between frames\*)-(roller centers)-(length)  
\*Specify 12", 18" or 24" overall width on gate models  
138GGS and 138AGS.

## SPRING LOADED GATES MODEL NO. (WHEEL) WAGS-24-20-3

(gate model)-(overall width\*)-(wheels per foot)-(length)  
\*Specify 12", 18" or 24" overall width on gate models  
WSGS and WAGS.

Spring loaded gate assemblies may be used to provide openings and walkways for operators, pedestrians or fork truck traffic or to simply make work areas in and around conveyors readily accessible. Tensioned springs offer increased lift capacity with minimal effort. Gates include hardware and conveyor section.



LOWER ELEVATION SUPPORT REQUIRED AT GATE HINGE SECTION. ADD 4-1/2" TO FRAME DEPTH TO DETERMINE PROPER SUPPORT.

■ 24 hour shipment

